



INVISIO PLUS GLASS

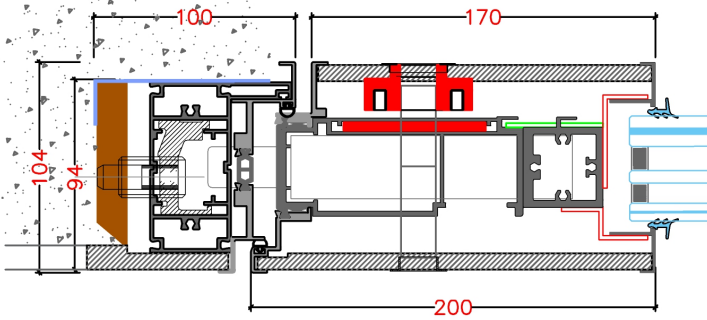
Porta blindata vetrata
Glazed Security door

Scheda Tecnica / Data Sheet

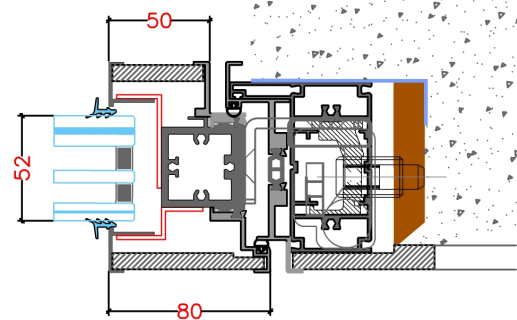
RC4

Secondo la normativa UNI EN 1627-30

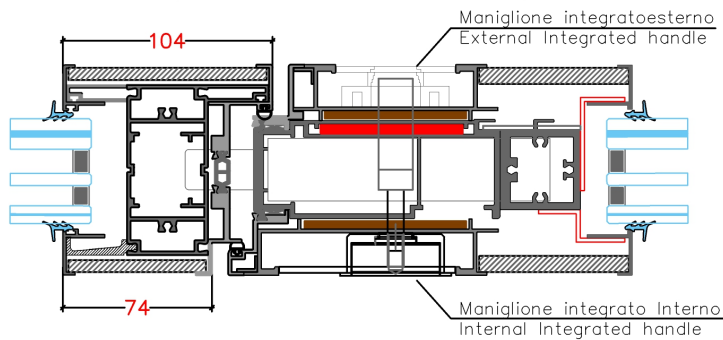
NODO LATERALE—LATO SERRATURA
Lateral section—Lock side



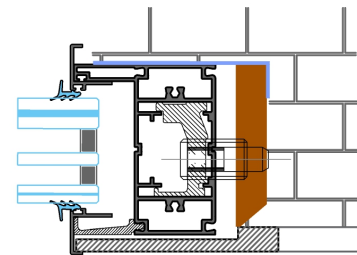
NODO LATERALE— LATO CERNIERA
Lateral section— hinge side



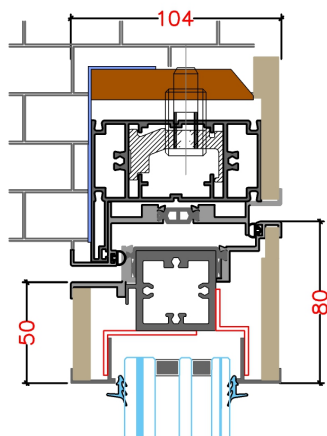
NODO APRIBILE — FISSO
Lateral / Fix section



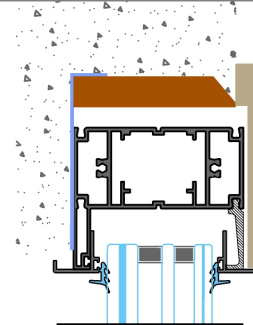
NODO LATERALE — FISSO
Fix section



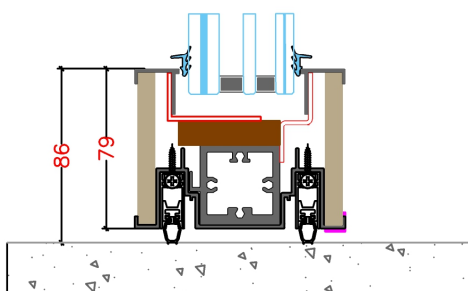
NODO SUPERIORE
Upper section



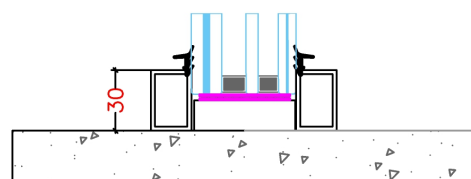
NODO SUPERIORE—FISSO
Upper section—FIX



NODO INFERIORE
Lower Section



NODO INFERIORE—FISSO
Lower Section—FIX





BLINDATURA CON ACCIAIO ZINCATO SP. 4,00 mm
Reinforced With 4 mm thick galvanized steel

1 PROFILI IN ALLUMINIO TAGLIO TERMICO
Aluminium profiles

2 EVENTUALE MANIGLIONE INTEGRATO
Integrated handle

3 DEVIATORI SUPERIORI E INFERIORI
Switches - upper and lower side

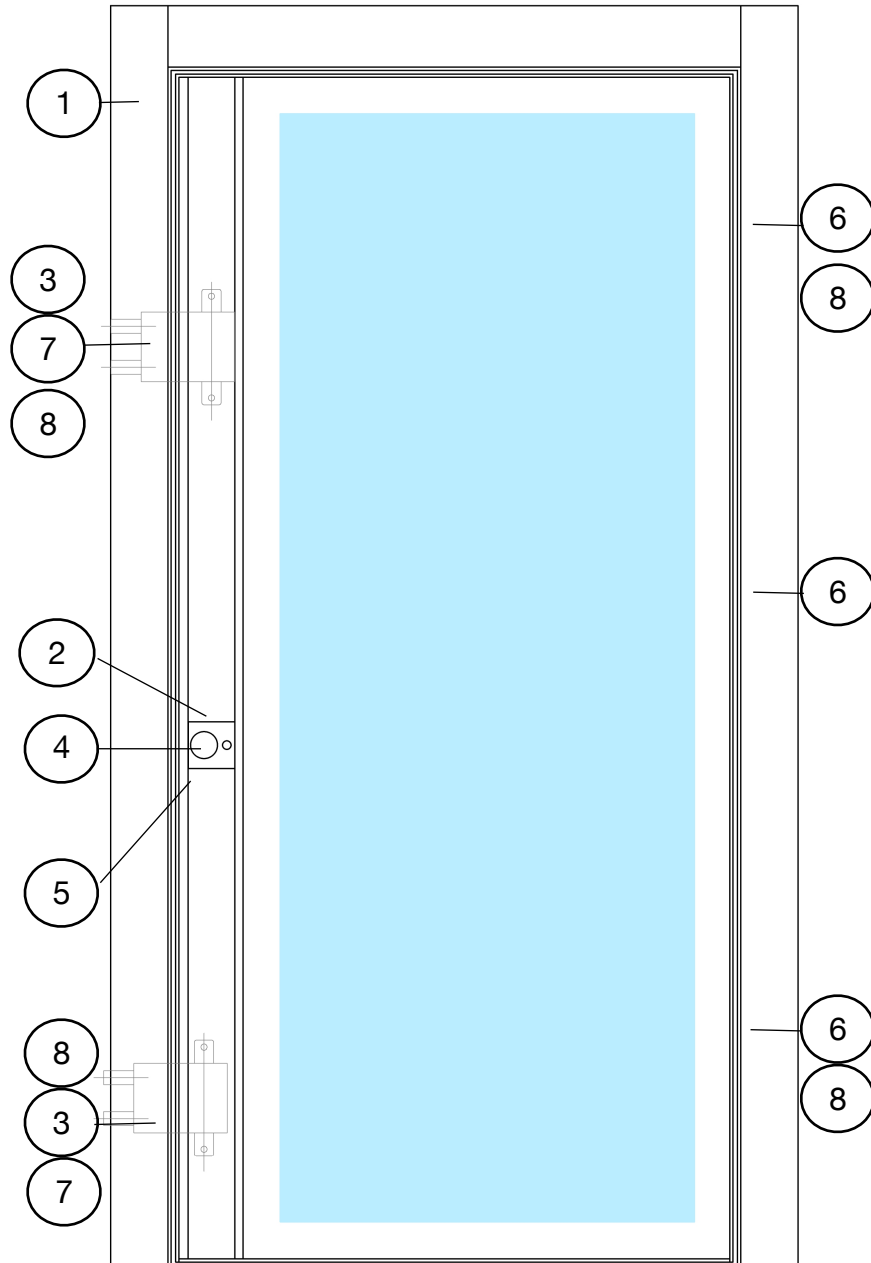
4 DEFENDER ESTERNO A SCOMPARSA
Security Defender system for cylinder protection

5 SERRATURA DI SICUREZZA AD INGRANAGGI CON CILINDRO EUROPEO E TESSERA DI PROPRIETA'
High-security gear lock with European cylinder and ownership card

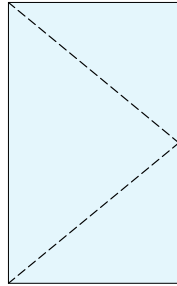
6 CERNIERE A SCOMPARSA CON SISTEMA FRENO ABS E BLOCCO FINE CORSA
Patented concealed hinges with ABS braking system and end-of-travel stop.

7 OMEGA GUIDA PUNTALI IN ACCIAIO INOX PER SERRATURA DEVIATORI
Omega stainless steel bolt guide for lock deviators

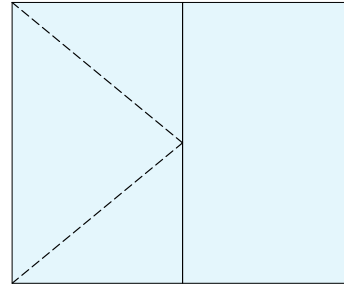
8 FISSAGGIO CON TURBOVITI MULTIPLE IN ACCIAIO
Fixing with multiple steel self-drilling screws



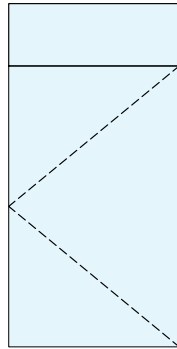
SINGOLA ANTA
Single door
APERTURA TIRARE DESTRA O SINISTRA
Right-hand or left-hand pull opening



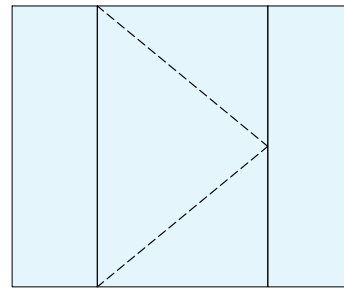
N° 2 ANTE : 1-FISSA E 1 APRIBILE
Two doors: one fixed and one that can be opened
APERTURA TIRARE DESTRA O SINISTRA
Right-hand or left-hand pull opening



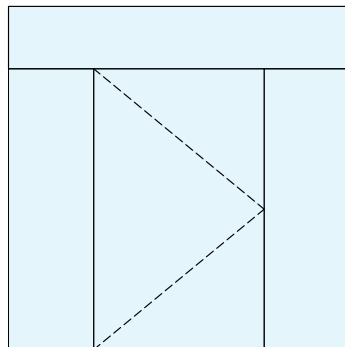
SINGOLA ANTA CON SOPRALUCE
Single leaf with transom window
APERTURA TIRARE DESTRA O SINISTRA
Right-hand or left-hand pull opening



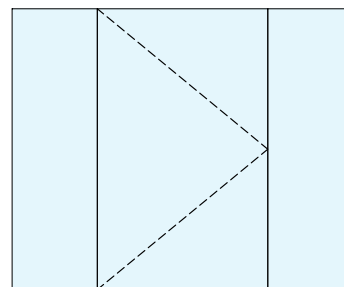
N° 3 ANTE : 2-FISSE E 1 APRIBILE
Three doors: two fixed and one that can be opened.
APERTURA TIRARE DESTRA O SINISTRA
Right-hand or left-hand pull opening



N° 3 ANTE : 2-FISSE E 1 APRIBILE CON SOPRALUCE
Three leaves: two fixed and one operable with transom window.
APERTURA TIRARE DESTRA O SINISTRA
Right-hand or left-hand pull opening



N° 3 ANTE : 2-FISSE E 1 APRIBILE
Three leaves: two fixed and one operable.
APERTURA TIRARE DESTRA O SINISTRA
Right-hand or left-hand pull opening



ANTI EFFRAZIONE



RC4

ISOLAMENTO TERMICO



UW 1.2

PROFILATI

Profili in estruso di alluminio taglio termico lega 6060 confermativa UNI 9006/1 (88/90). Lo stato della finitura è T5

BLINDATURA

Montante anta blindato con piatto di acciaio INOX sp. 4mm posto a protezione di serratura e deviatori. Struttura anta rinforzata con acciaio zincato sp. 2mm

ACCESSORI

- . Serratura di sicurezza ad ingranaggi con cilindro europeo
- . Deviatori inferiori e superiori
- . Cerniere a scomparsa brevettate con sistema freno ABS e blocco di fine corsa
- . Defender a scomparsa
- . Omega guida puntali in acciaio INOX per serratura e deviatori
- . Fissaggio con Turboviti multiple in acciaio
- . Doppia guarnizione automatica inferiore
- . Doppia guarnizione perimetrale di battuta in silicone
- . Viteria in acciaio inox

CARATTERISTICHE TECNICHE E DIMENSIONALI

Sistema di sicurezza composto da profili estrusi di alluminio complanare sia sul lato esterno che quello interno, con possibilità di rasomuro.

Apertura ad anta battente vetrata con possibilità di fiancoluce e sopra luce fissi vetrati o ciechi.

VETRATURE

La versione Invisio Plus Glass, nelle parti vetrate, utilizza un vetro blindato anticrimine certificato in classe P6B abbinato ad una doppia camera e vetro basso emissivo per un'eccellente isolamento termico e acustico.

SERRATURE

- . Serratura di sicurezza ad ingranaggi a cilindro europeo (standard)
- . Serratura di sicurezza ad ingranaggi a doppio cilindro europeo con chiavi masterizzate
- . Serratura elettromeccanica "smart" con tastiera numerica finger print e lettore TAG gestibile da App.

PRESTAZIONI E CERTIFICAZIONE

- . **CERTIFICAZIONE ANTIEFFRAZIONE CLASSE RC4** (in fase di certificazione) - norma UNI ENV 1227/30:2011
- . **TRASMITTANZA TERMICA** U_w 1.2 W/m²K - Valori ottenuti per una porta 1 anta con dimensioni normalizzate secondo norma UNI EN 14351-1 (1,23 (±25%) x 2,18(±25%)) con doppio vetrocamera U_g 0,7 W/m²K
- . **TRASMITTANZA ACUSTICA 44 Db** - Norma EN140-1 33

PROFILES

Profiles made of extruded aluminum with thermal break, alloy 6060 compliant with UNI 9006/1 (88/90). The finish condition is T5

ARMORED STRUCTURE

Armored door leaf upright with a 4 mm thick stainless steel plate positioned to protect the lock and deviators. Door leaf structure reinforced with 2 mm thick galvanized steel

ACCESSORIES

- Gear-operated security lock with European cylinder
- Lower and upper deviators
- Patented concealed hinges with ABS braking system and end-stop locking mechanism
- Retractable defender (lock protector)
- Omega stainless steel bolt guide for lock and deviators
- Fixing with multiple steel turbo screws
- Double automatic bottom seal
- Double perimeter silicone rebate seal
- Stainless steel screws and fittings

TECHNICAL AND DIMENSIONAL FEATURES

Security system composed of coplanar extruded aluminum profiles on both the external and internal sides, with the option of flush-to-wall installation. Glazed hinged door opening with the possibility of fixed glazed or blind sidelights and transom lights.”

GLAZING

The Invisio Plus Glass version, in the glazed sections, uses anti-burglary laminated safety glass certified in class P6B combined with a double glazing unit and low-emissivity glass to ensure excellent thermal and acoustic insulation.

LOCKING SYSTEMS

- Gear-operated security lock with European cylinder (standard)
- Gear-operated security lock with double European cylinder and master-keyed system
- Electromechanical smart lock with numeric keypad, fingerprint scanner and TAG reader, app-controlled

PERFORMANCE AND CERTIFICATION

BURGLAR RESISTANCE CERTIFICATION CLASS RC4 (in certification phase) – according to UNI ENV 1627/30:2011

THERMAL TRANSMITTANCE U_w 1.2 W/m²K – values obtained for a single-leaf door with standardized dimensions according to UNI EN 14351-1 (1.23 (±25%) × 2.18 (±25%)) with double glazing U_g 0.7 W/m²K.